



Stainless steel  
**LINEAR**  
Shower grate





KITCHEN

BALCONY

SHOWER ROOM

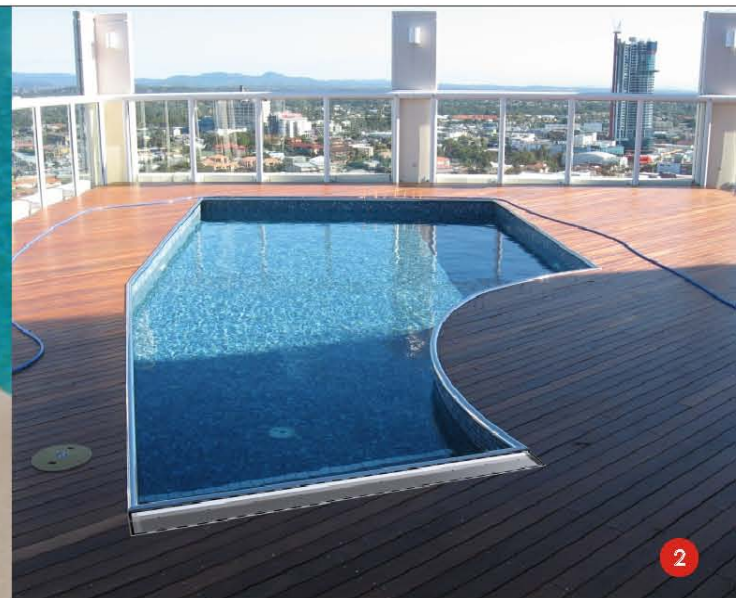
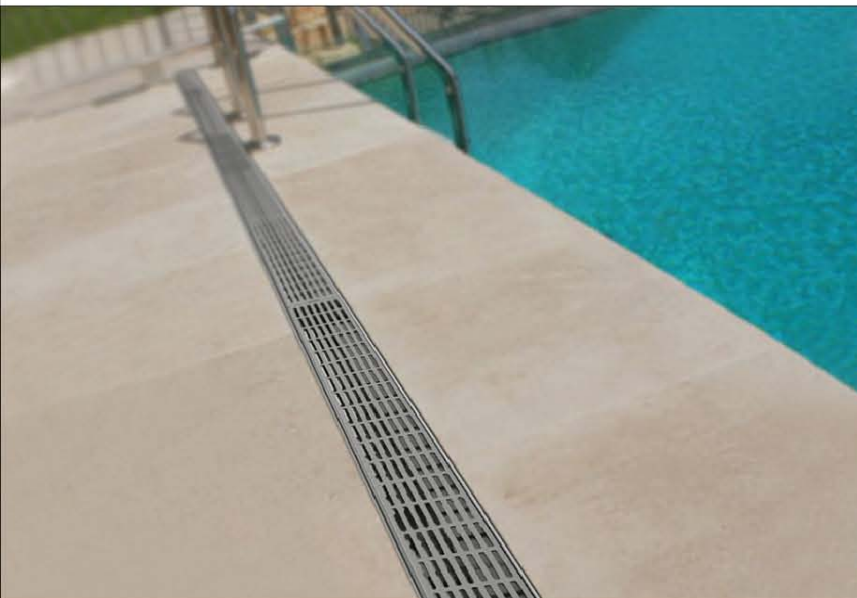
SWIMMING POOL

- Reliable quality
- Clean and health
- Fashion and beautiful
- Security and practical



## JINXIN SHOWER GRATES

- JINXIN company now stock a new range of stainless steel floor drain suitable for both internal and external use ,i.e.bathrooms,pathways,balconies,patio areas, around pool and many other commercial application like main entries,bar tops etc.
- These drains are designed to allow plenty of water to be drained away. Drain base come with fall lines creased into the base drain for the smooth flow of water to the outlet. Outlet is fully welded to the drain base. Outlet is 50mm. Outlet is in the centre of the drain. All drain bases are made from 304/316 Stainless Steel.





Wood



Ceramic



Stone



End

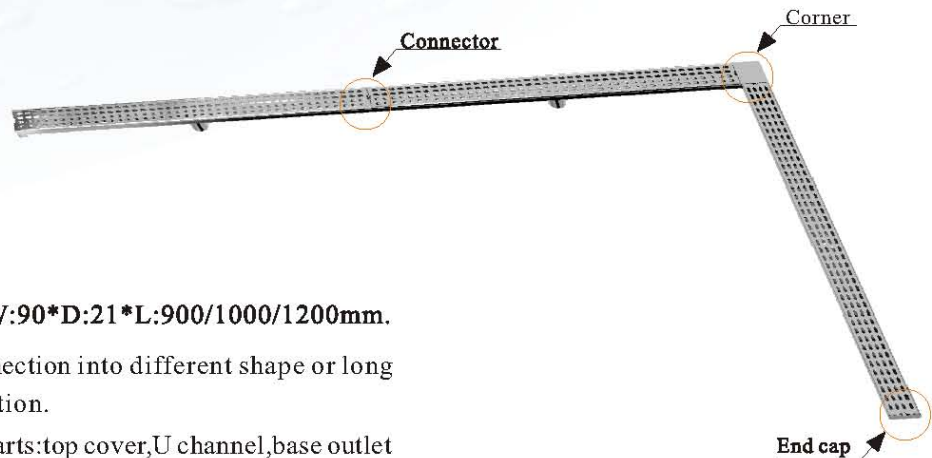


Outlet



Conner

# Linear Shower Grate



## YK-9700

- The floor drain has three size :W:90\*D:21\*L:900/1000/1200mm.
- We offer full set fittings for connection into different shape or long meter at site with quick installation.
- The body is combined by four parts:top cover,U channel,base outlet and two ends.



YK-9704



YK-9703



YK-9706



## YK-9709



- The material can be stainless steel 304 and 316 with satin and mirror finish
- The floor drain is mainly used for bathroom or wine club for leak water or beer or drinkery.
- The oval holes over the top cover plate can guarantee leaking water but proof hairline or others rubbish jam.

Cover



Base plate



Outlet



## MORE PRODUCTS

- It is a cost effective alternative for your internal wet areas.
- The stainless steel shower grate with full welded base to eliminate leaks.
- It can create a nice contrast between your tiles and the brushed stainless steel.
- We offer full range with different cover shape on interior styles for your choice .



## MORE PRODUCTS

- The latest styling in shower grates. Almost invisible by using your tile.
- Ends in a small stainless steel slot. Excellent in hiding any dirt and debris.
- Most versatile by allowing you to use your own tile and blends into your floor.



## WORKSHOP

- We are Chinese true manufacturer not middle trade man, so that the all products are directly sell to you with competitive price and excellent designs.
- The shower grades with nice and safe package forbid damage in the transportation. We also take care the surface no cracks with film protect.
- We have Cut, Bend, Press and Weld machines, CNC and laser tooling, they are the key to the drain process .



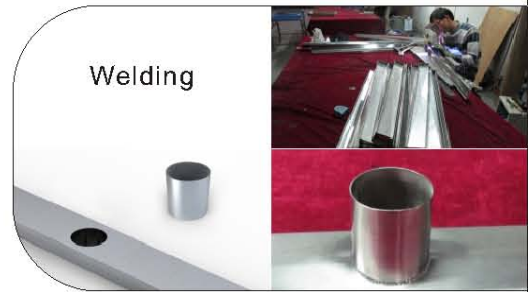
Cutting



Pressing

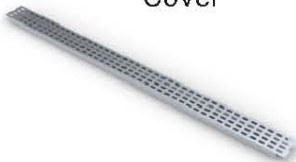


Bending



Welding

Cover



Base



Long shower grate

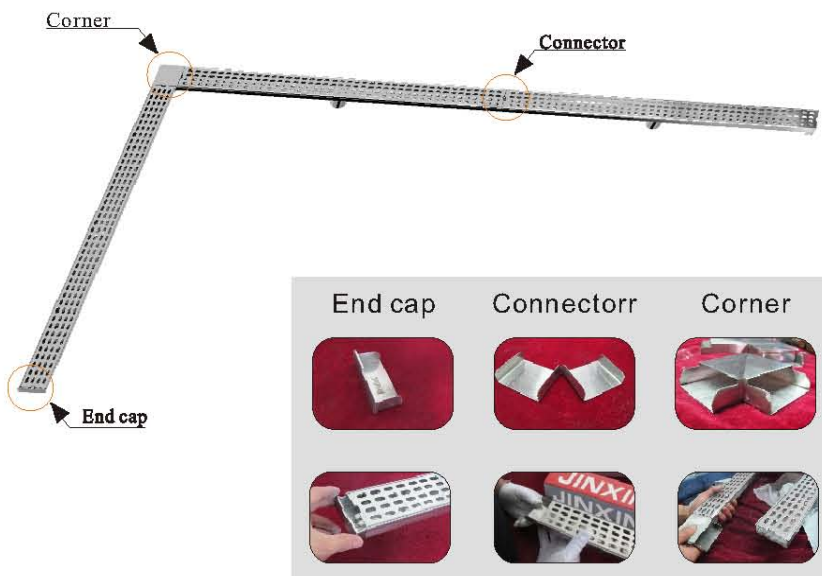




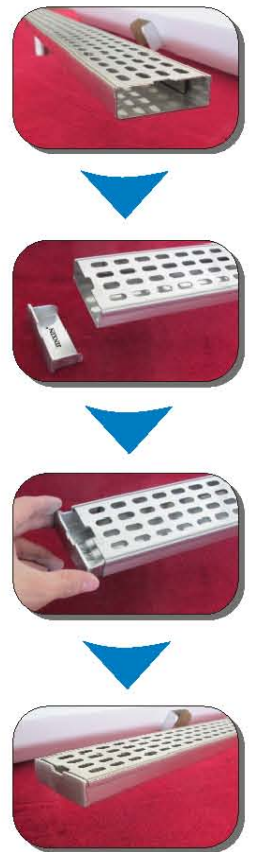


## FITTINGS

- The shower grates has two kinds of type for your selection: closed end and open end.
- For the open end style, we can offer the full set fittings such as end cap, middle connector, corner joiner for you.
- The fittings help you most conveniently when application at site for different linear length and corner place.



### OPEN STYLE



## JINXIN LOGO

- Each of the Long Floor Drain and the component are marked the "JINXIN" logo by the High Precision Metal Marking Machine. But we can also imprint the band as your specific demand.
- Drain Components:
  1. End cap for the Drain base
  2. Corner Connector for 90 degree floor drain.
  3. Middle Connector to make two drain joint and continue.







## **JINXIN HANDWARE HARDWARE PRODUCTS MANUFACTORY**

**TEL:**86-20-86910211    **FAX:**86-20-86852230

**WEB:**[www.doorware.net](http://www.doorware.net)

**MSN:**[yongshun7777@hotmail.com](mailto:yongshun7777@hotmail.com)

**EMAIL:**[sales@doorware.net](mailto:sales@doorware.net) , [doorware@gmail.com](mailto:doorware@gmail.com)

**ADDRESS:**Dayun Industrial Area, Pingbu Road, Yangwu,  
Shiling Town, Huadu District, Guangzhou, China.